



# SERIES 700

## 3" x 4" End Suction Centrifugal Pump

The Series 700 End Suction Centrifugal Pump is engineered to deliver exceptional performance for demanding applications across agriculture, commercial operations, industrial processes, and OEM systems. Built in compliance with ANSI A-40 standards, it guarantees consistent quality and reliability.

Crafted from robust ductile iron and secured with stainless steel fasteners, this pump is designed for durability in harsh environments, ensuring extended service life. Its dynamically balanced enclosed impeller improves operational efficiency and minimizes bearing wear, helping reduce maintenance costs and downtime.

A key advantage of the Series 700 is its high capacity, capable of moving up to 900 GPM (204.4 m<sup>3</sup>/h) and achieving heads of 170 feet (52 m). This makes it an excellent choice for large-scale applications requiring dependable, continuous flow.

The pump is equipped with a carbon/ceramic/Viton mechanical seal, which is self-adjusting and corrosion-resistant, allowing it to handle a wide range of fluids. For specialized requirements, alternative seal material combinations can be provided upon request.

Available with or without a motor, the Series 700 offers flexibility to match your specific needs. Multiple impeller diameters are also available, enabling precise customization for different head and flow conditions to ensure optimal performance.

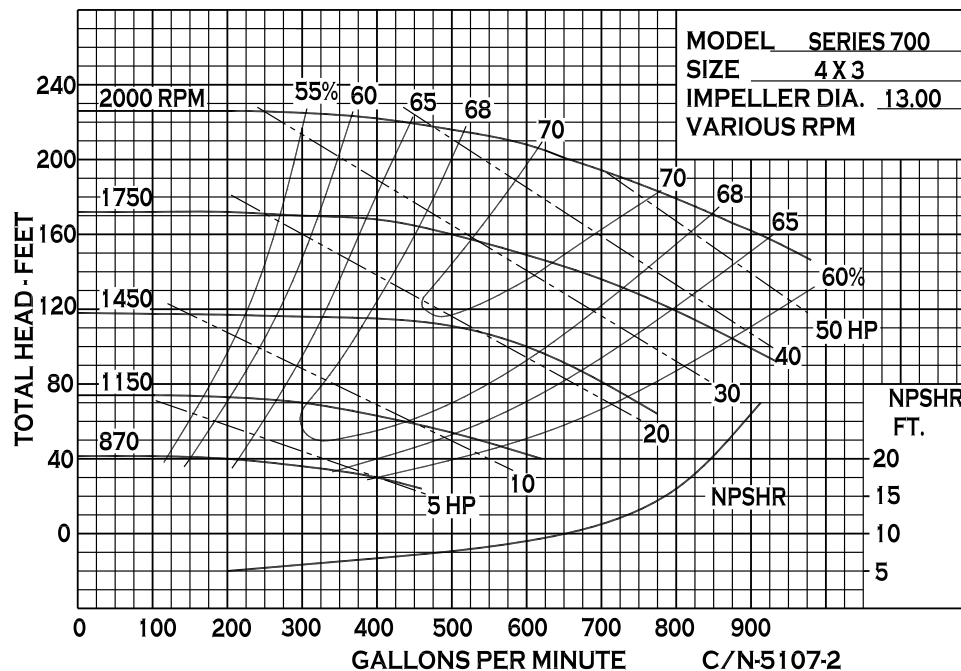
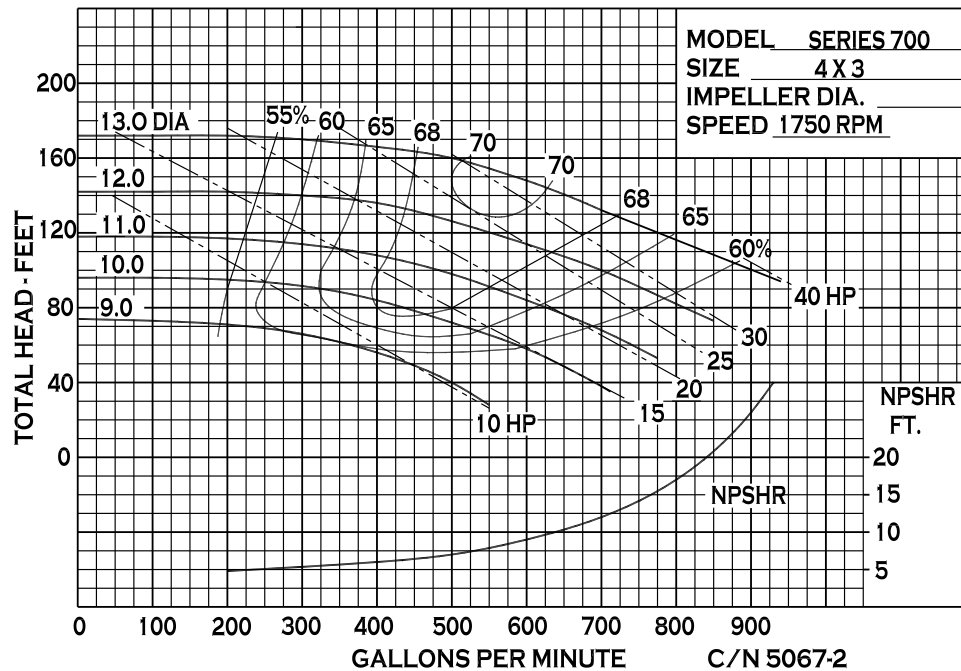
### SPECIFICATIONS:

<b>Suction / Discharge</b>	4" x 3" 150# ANSI Flanges
<b>Materials of Construction</b>	Ductile iron
<b>Flow</b>	Up to 900 GPM (204.4 m <sup>3</sup> /h)
<b>Head Feet</b>	Up to 170' (52 m)
<b>Impeller</b>	13" (330.2 mm) enclosed
<b>Motor</b>	Up to 40 HP (29.4 kW)
<b>Seal</b>	Special seal material combinations available (consult factory), Standard carbon / ceramic / Viton
<b>Drive Options</b>	Close coupled 254JP Close coupled 256JP Pedestal Loose Parts Kit (Pump-End Only)
<b>Max Solid Size</b>	.65" (16.5 mm)

### Application:

- Agricultural
- Commercial
- Industrial
- OEM

## PERFORMANCE CURVES

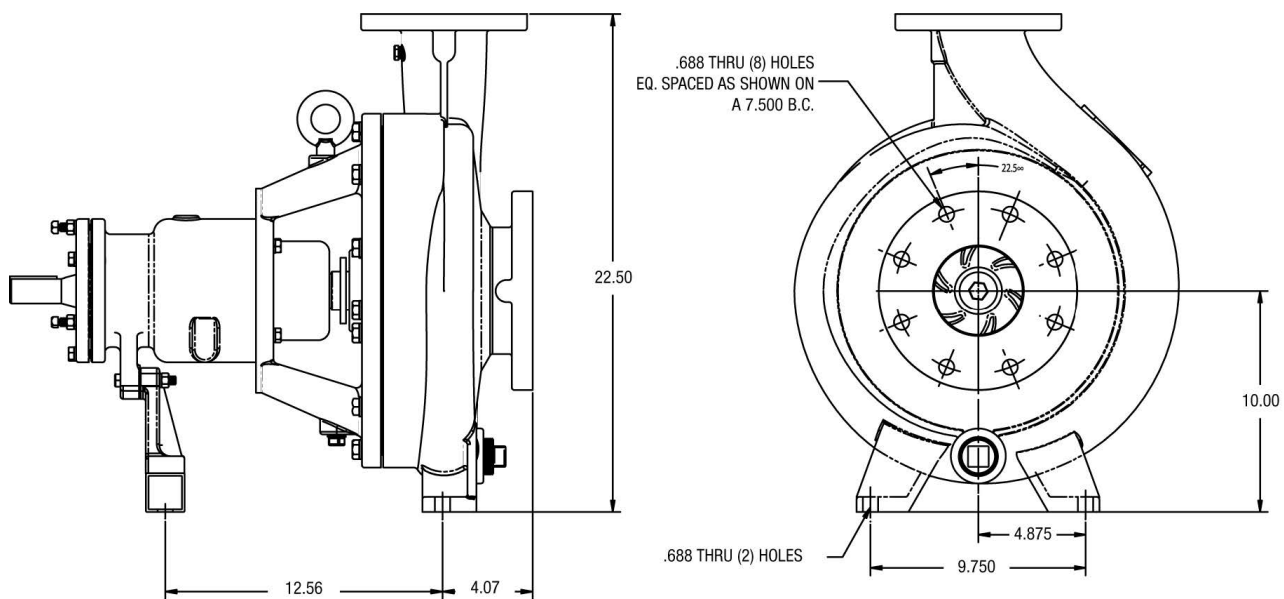




An Ingersoll Rand Business

# SERIES 700

## DIMENSIONS



\* For complete parts lists and troubleshooting guidance, please refer to the MP Pumps Installation Operation & Maintenance (IOM) Manual.



12500 South Pulaski Road  
Alsip, IL 60803, USA  
Phone (800) 563-8006